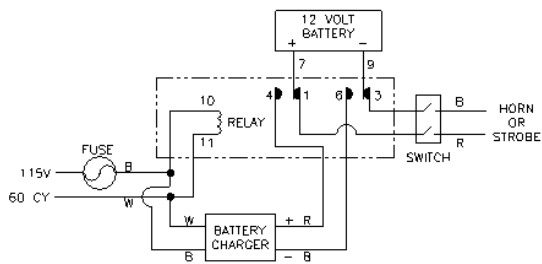
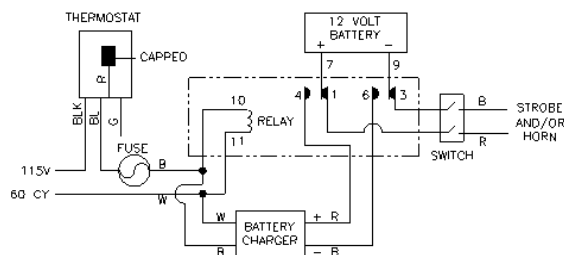


Power Loss Alarm



Power Loss & Low Temperature Alarm



PLAHBO Audible Power Loss Alarm: The alarm consists of the cabinet, battery, battery charger, relays, 95-decible horn, six foot power cord and plug. The alarm is designed to activate the horn if the enclosure loses electrical power.

PLAHBOS Visual Power Loss Alarm: The alarm consists of the cabinet, battery, battery charger, relays, amber strobe light, six foot power cord and plug. The alarm is designed to activate the strobe light if the enclosure loses electrical power

PLAHBO-T Audible Power Loss and Low Temperature Alarm: The alarm consists of the cabinet, battery, battery charger, relays, 95-decible horn, temperature sensor, six foot power cord and plug. The alarm is designed to activate the horn if the enclosure loses electrical power or if the temperature falls below the set "adjustable" temperature

PLAHBOS-T Visual Power Loss and Low Temperature Alarm: The alarm consists of the cabinet, battery, battery charger, relays, amber strobe light, temperature sensor, six foot power cord and plug. The alarm is designed to activate the strobe light if the enclosure loses electrical power or if the temperature falls below the set "adjustable" temperature

PLAHBOT-S Audible and Visual Power Loss and Low Temperature Alarm: The alarm consists of the cabinet, battery, battery charger, relays, 95-decible horn, amber strobe light, temperature sensor, six foot power cord and plug. The alarm is designed to activate both audible and visual notifications if the enclosure loses electrical power or if the temperature falls below the set "adjustable" temperature

With a fully charged battery the alarm should display for a minimum of six hours or until deactivated. The alarms operate on 120v, single phase service and plugs into a G.F.I. receptacle.

Installation:

- Contractors other than Hot Box are responsible for the installation of the G.F.I. protected 20 amp, 120v, single phase service and receptacle. **Alarm and Heater must be supplied by the same electrical service.** All installations to be in accordance with the local and national codes.
- Simply plug the alarm into the receptacle and turn the switch to the on position.
- For low temperature alarms adjust the thermostat to desired temperature. (34°-38°F recommended)

Hot Box
3621 Industrial Park Drive
Lenoir City, TN 37771

Contact Information
Phone: (800) 346-3062
hotboxsales@hubbell.com
www.hot-box.com